



**secUDOS**  
APPLIANCE TECHNOLOGIES



# MultiAppliance Productsheet

# SECUDOS MultiAppliance

For hyper converged infrastructures with focus on performance, flexibility, investment protection and cost reduction

IT administrators and engineers prefer to purchase “solution-in-a-box” as they only need to work with a single vendor for any issue (both hardware and software) with the solution. This means, solutions which come in an appliance are always preferred. In today's complex IT security world, a company typically needs to purchase various different security solutions to complete their security/defense needs. This will mean having to manage and maintain a rack of appliances from different security vendors. As a consequence this is driving up costs for investment, management & maintenance.

## The everyday problem

If the currently used software solution does no longer meet the requirements and has to be changed, there often is no further use for the purchased hardware on which the software was operated. The problem is that the software is tied to the hardware of the provider and therefore not suitable for a change. Typically, a replacement of the whole appliance is required. This is expensive.



## How MultiAppliance can help

Companies equipped with SECUDOS MultiAppliance are now able to reduce costs regarding their IT security investments. At the same time, the company enjoys a host of flexibility with allocation of resources and switching of vendors. The SECUDOS MultiAppliance lets the IT administrator install, host and manage all the required IT security solutions as virtual servers (VPS) on one single appliance platform.



Should the company decide to change a firewall vendor or an anti-virus vendor, it can easily be done through firing up a new VPS for the new software and shutting down the old one. The only new investment here is the license fee for the new software, there is no need to allocate budget for any new hardware. The “hardware” resources used to run the old software is recycled and used in the new software.

In just one SECUDOS MultiAppliance platform a company can install and host all its applications with SECUDOS as its long term partner.



### **The basis of MultiAppliance**

All devices are delivered ready for use with the open-source virtualization platform Proxmox. Proxmox VE is a Debian-based open source virtualization platform with a web interface for running and managing virtual appliances. Proxmox combines KVM and container-based virtualization and manages virtual machines, containers, storage, virtual networks and high-availability clusters through the central management interface.

In addition to Proxmox, the SECUDOS MultiAppliance-Center is installed. It offers a wide range of pre-packaged software solutions that can be installed with just a few clicks - both well-known open source solutions and a variety of leading commercial solutions. Collaboration between SECUDOS and the commercial partners in the MultiAppliance-Center substantially reduces the burden on users as all solutions have been pre-tested and validated. Any software can be put into operation without much effort and know-how.

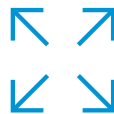
# Benefits of MultiAppliance

MultiAppliance is the all-purpose weapon when it comes to virtualization



## Investment Protection

By consolidating the applications from the traditional servers and server appliances into a SECUDOS MultiAppliance platform, you can rationalise your investment and achieve better utilisation rate. You have full flexibility to allocate and reassign your hardware resources (Storage, RAM, CPU) as and when required, unlike traditional server or appliance systems where the hardware resources are permanently tied to the specific software.



## Multifunctional Solution

With the SECUDOS MultiAppliance platform, you can host multiple applications, add new virtual servers (VPS) and install new applications on it, stop/remove applications which are no longer required. All these can be executed easily from the Management Center in the SECUDOS MultiAppliance. For example, you can easily map two firewalls on the network (from 2 different vendors) just by using the Center on the MultiAppliance.

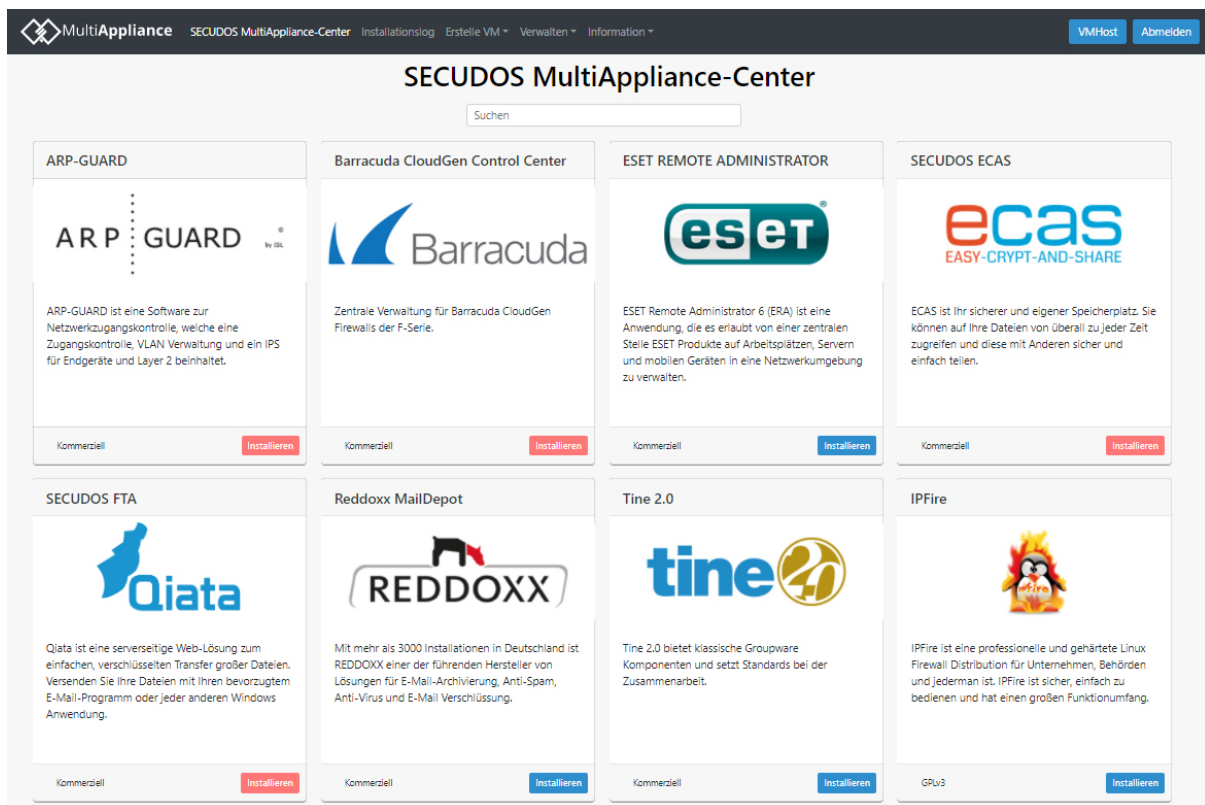


## Future-Proof Hardware

Unlike all-purpose servers, the SECUDOS MultiAppliances are specifically designed for their purpose. The internal bus systems are designed for high data throughput and VPN performance. Crypto accelerators at the CPU level or as independent hardware options increase the throughput considerably. LCD displays and / or LEDs provide the user with up-to-date system information. Through the direct connection within the MultiAppliance, all gateway solutions are designed in such a way, that an extremely fast communication among each other is possible.

# MultiAppliance-Center

Using the MultiAppliance-Center you have the possibility to virtually install your network applications with some clicks



The MultiAppliance-Center offers a wide range of pre-packaged software solutions that can be installed within just a few clicks - both well-known open source solutions and a variety of leading-edge commercial solutions. Collaboration between SECUDOS and the commercial partners in the MultiAppliance-Center substantially reduces the burden on users as all solutions have been pre-tested and validated. Any software can be put into operation without much effort and know-how. Save yourself a lot of worry and effort and install the desired solution with just one click.

# More Benefits

MultiAppliances offer you many more benefits, revolutionizing standard appliances



## **Simple and Intuitive Administration**

The SECUDOS MultiAppliance comes pre-installed with Proxmox and the MultiAppliance-Center. This allows you to set up a VM to run your desired software with just a few clicks, making set up of your VM solutions quick and easy. If you were to build the Proxmox server from scratch, you will have to deal with hardware selection and matching. Handling compatibility issues and troubleshooting then will cost you a lot of time.



## **Can stand almost any price comparison**

The extremely powerful hardware does not only impress with flexibility and a lot of features, but also in terms of a direct price comparison with other solutions. The costs of the MultiAppliances are fairly calculated and reasonable. There are only few order items for each appliance and an attractive, tailor-made support concept.



## **Energy Efficient**

Instead of running individual servers for each application, by consolidating all your applications to run on the SECUDOS MultiAppliance, you will not only save money on your infrastructure investment but also on the cost of running the systems. The SECUDOS MultiAppliance will help you achieve high energy efficiency.



# MultiAppliance-Entry

The MultiAppliance-Entry is intended for home office applications or for small businesses

## MultiAppliance-Entry



- ✓ Intel Atom®
- ✓ 8GB DDR4
- ✓ 1 x 240GB Intel server-grade SSD
- ✓ 1 x 64GB mSATA SSD
- ✓ 2 x USB 3.0
- ✓ 4 x GbE RJ45 ports + 2 x SFP

The MultiAppliance-Entry is suitable for SOHO (Small Office & Home Office). The Entry version of the MultiAppliance range is a desktop appliance that operates fanless and therefore very quiet. It is the smallest appliance of the family. The MultiAppliance-Entry is equipped with an Intel Atom®, 8GB DDR4 RAM, a 240GB Intel server-grade SSD and a 64GB mSATA. The Entry has 4 GbE RJ45 ports, 2 GbE SFP ports and two USB 3.0 ports.

# MultiAppliance-Basic(+)

The MultiAppliance-Basic (+) is intended for medium-sized businesses with low to medium requirements

MultiAppliance-Basic	MultiAppliance-Basic+
	
	
✓ Intel® Core™ i5	✓ Intel® Xeon®
✓ 16GB DDR4	✓ 32GB DDR4
✓ 1 x 480GB Intel server-grade SSD	✓ 2 x 480GB Intel server-grade SSD
✓ 1 x 64GB mSATA SSD	✓ 1 x 64GB mSATA SSD
✓ 2 x USB 3.0	✓ 2 x USB 3.0
✓ 6 x GbE RJ45 ports	✓ 6 x GbE RJ45 ports + 2 x SFP

The MultiAppliance-Basic is offered in two configuration levels. In its entry level version, the MultiAppliance-Basic is equipped with an Intel® Core™ i5, 16GB DDR4 RAM, a 480GB Intel® server-grade SSD and a 64GB mSATA SSD. In addition, the device has an IPMI card installed. The second variant, the MultiAppliance-Basic+, uses an Intel® Xeon®, 32GB DDR4 RAM, two 480GB Intel® server-grade SSDs and also a 64GB mSATA SSD. The Plus version also uses IPMI and is especially designed for companies with higher requirements.

# MultiAppliance-Business(+)

The MultiAppliance-Business (+) is suitable for medium to large companies

## MultiAppliance-Business



✓ Intel® Xeon® E5 (10 x 2,4GHz)

✓ 128GB ECC DDR4

✓ 2 x 960GB Intel server-grade SSD

✓ 1 x 64GB CFast

✓ 8 x GbE RJ45 ports & 4 x GbE SFP+

✓ Redundant power supply

## MultiAppliance-Business+



✓ Intel® Xeon® E5 (18 x 2,1GHz)

✓ 128GB ECC DDR4

✓ 2 x 960GB Intel server-grade SSD

✓ 1 x 64GB CFast

✓ 8 x GbE RJ45 ports & 4 x GbE SFP+

✓ Redundant power supply

The MultiAppliance-Business is suitable for medium to large companies. The business version of the MultiAppliance is also available in two expansion stages. The first expansion stage is equipped with an Intel® Xeon® E5, 128GB ECC DDR4 RAM, two 960GB server-grade SSDs and a 64GB mSATA SSD. The MultiAppliance-Business also has 4 SFP + ports and a redundant power supply. The Plus version of the Business version has similar features, but includes a stronger CPU for even more compute-intensive applications and more power.



# MultiAppliance-Enterprise

The MultiAppliance Enterprise is suitable for large companies and corporate headquarters

## MultiAppliance-Enterprise



✓ 2 x Intel® Xeon® Silver

✓ 256GB ECC DDR4

✓ 4 x 4TB Intel NVMe SSD

✓ 1 x 64GB mSATA SSD

✓ 8 x GbE RJ45 ports & 4 x GbE SFP+

✓ Redundant power supply

## MultiAppliance-Enterprise+



✓ 2 x Intel® Xeon® Gold

✓ 640GB ECC DDR4

✓ 4 x 8TB Intel NVMe SSD

✓ 1 x 64GB mSATA SSD

✓ 8 x GbE RJ45 ports & 4 x GbE SFP+

✓ Redundant power supply

The MultiAppliance-Enterprise is suitable for large companies and corporate headquarters. The enterprise version of the MultiAppliance series is the strongest system in its range and also available as a Plus variant. In its first configuration the MultiAppliance-Enterprise is equipped with two Intel® Xeon® Silver, 256GB ECC DDR4 RAM, four 4TB Intel NVMe SSDs and a 64GB mSATA SSD. The Plus variant includes a stronger CPU (Xeon® Gold), more RAM and twice its disk space. Both Enterprise versions have 4 SFP + ports and a redundant power supply.

# Small, but oh!

SDR-Stick is the simple way to perform a complete appliance recovery within minutes

With the SDR technology from SECUDOS you are always secure. Easy installation of the software and quick startup in case of failure are the main features. With the included SDR flash drive, you can get the system up and running within minutes.

## Fast recovery

In the case of a system failure, it must be possible to restore the IT infrastructure very fast. Just use the SDR-Stick and wait a few minutes. The new installation will be faster done than you expect.

## Installation in a class of its own

The SDR stick is not only the best choice when a complete recovery is needed, it is also very helpful while the individual initial setup and rollout of a number of appliances in projects.



## Easy handling

The SDR sticks mostly can be handled by technically unexperienced staff. Insert - Restart - Done.

## Backup included

The SDR stick does not only include all the installation files which are needed to quickly reinstall the system, but also all the metadata and basic configuration. The system will be put into operation immediately when the SDR procedure is completed.

# SECUDOS Services

At SECUDOS service is a high priority for us. Whether 3, 5 or 7 years including pre-exchange or cold standby - you decide!

## **SECUDOS warranty**

The standard warranty for each appliance is 12 months bring-in. With the SECUDOS warranty, you will get 12 months after the warranty bring-in service for defective appliances (max 24 months possible).

## **Proxmox Software Subscription**

Includes 12 months Proxmox Community Software Subscription. This gives you access to the Proxmox Enterprise Repository. Further support is available in the Community Forum (Extended Proxmox Software Support Packages upon request).

## **SupportPackage**

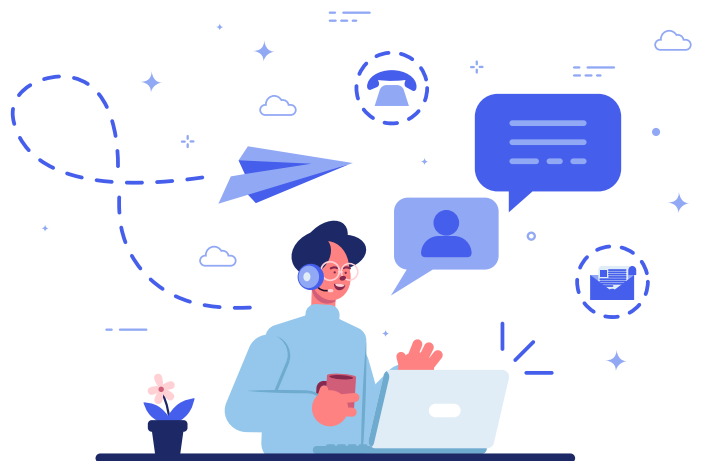
The SupportPackage includes 12 months hardware support (up to 60 months total lifetime) with guaranteed support response time within 4 hours during general office hours. In the case of an RMA, please contact our RMA team.

If the RMA case is resolved by 14:00, the replacement appliance will be shipped at the same day. You will return the defective appliance to SECUDOS after the replacement (at the latest 5 days after delivery of the replacement appliance). The cost of shipping incurred in the RMA case is shared. The customer will ship the faulty unit at its own expenses, SECUDOS will send the RMA unit to the customer for free. In addition the SupportPackage includes 12 months of Proxmox Community Software Subscription.

## **SupportPackage Cluster**

The SupportPackage Cluster includes all services of the SupportPackage for a complete cluster - consisting of 3 nodes from the same appliances.

(Only if you buy 3 appliances of the same type)



### **SupportPackage Plus**

The SupportPackage Plus includes 36 months hardware support (up to 60 months total lifetime) with guaranteed support response time within 4 hours during general office hours. The customer receives a Cold-Standby appliance with the SupportPackage Plus to quickly act in the RMA case. In the case of an RMA, please contact our RMA team. If the RMA team authorizes the use of the cold-standby appliance, replace the failed appliance with the cold-standby appliance. You return the defective appliance to us after the replacement (at the latest 5 days after replacement of the appliance). The shipping costs for the shipment of the defective appliance will be borne by the customer. SECUDOS will check the defective appliance upon receipt and repair it if necessary. Afterwards you get the repaired appliance back, which you then use as a cold-standby appliance. If a repair is not possible, you will receive a replacement appliance. Within the 36 months, the Cold-Standby Appliance remains the property of SECUDOS. After 36 months, the cold-standby appliance then will become the property of the customer. In addition, the SupportPackage includes 36 months of Proxmox Community Software Subscription.

### **SupportPackage Plus Cluster**

The SupportPackage Cluster includes the runtime and all SupportPackage Plus services for a complete cluster - consisting of 3 nodes from the same appliances.

(Only if you buy 3 appliances of the same type)



# Contact us

We are happy to help you with any questions

## Manufacturer

SECUDOS GmbH  
Südfeld 9C  
59174 Kamen  
Germany

## About SECUDOS

SECUDOS is an innovative and rapidly expanding appliance technology and services provider focused on IT security and compliance. As a specialist in appliance technologies, its roots date back to 1996.

## Contact

Tel .: +49 2307 28 50 53 30  
Fax .: +49 2307 28 50 53 31  
Mail: [sales@secudos.de](mailto:sales@secudos.de)

SECUDOS is one of the pioneers in the IT appliance environment. As a quality leader, SECUDOS combines solutions from selected software providers with the highest quality appliance hardware in their products.



All information contained in these documents is subject to change without notice and should not be construed as a commitment by SECUDOS. All logos and trademarks used are the property of their registered owners.